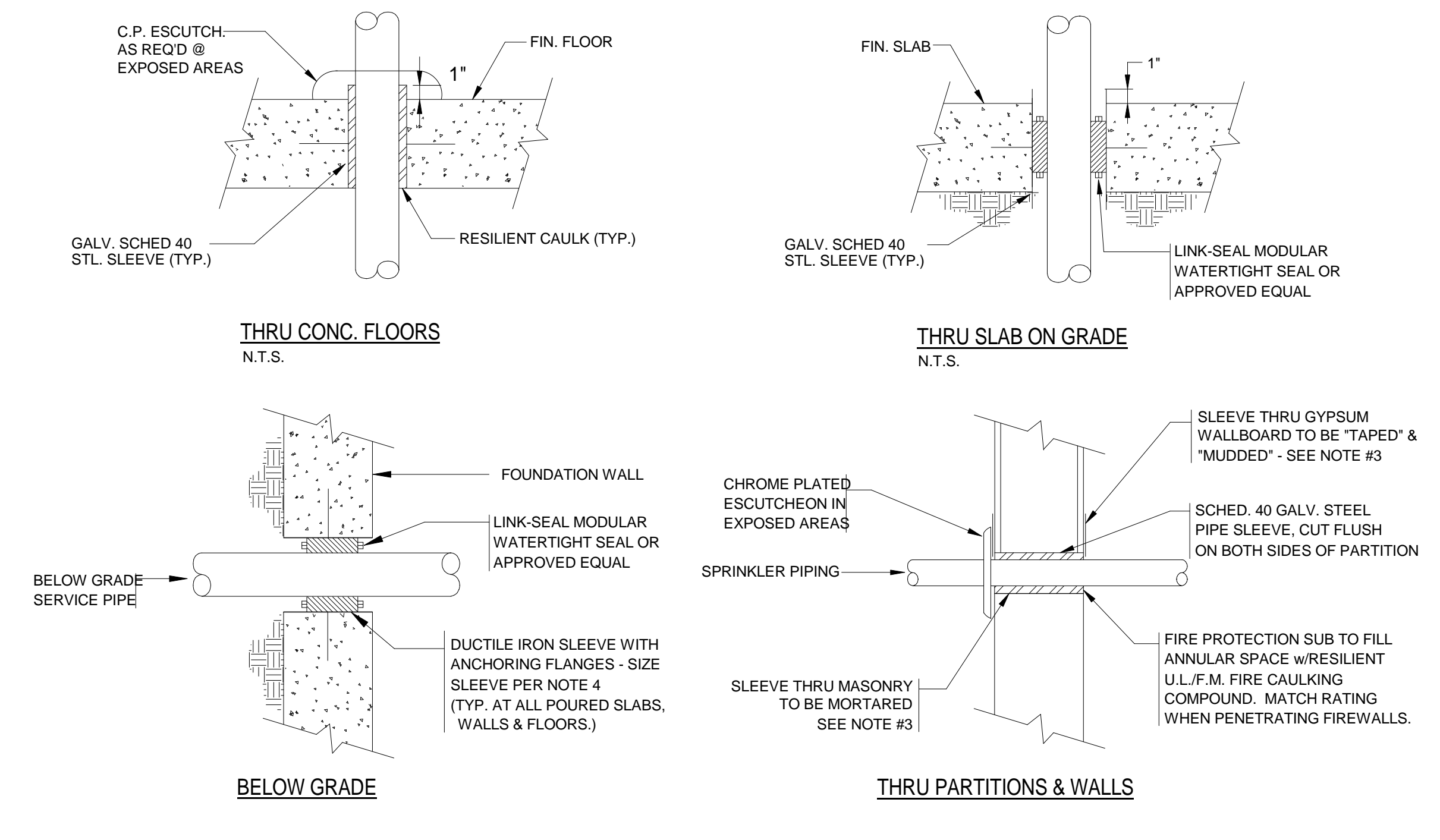


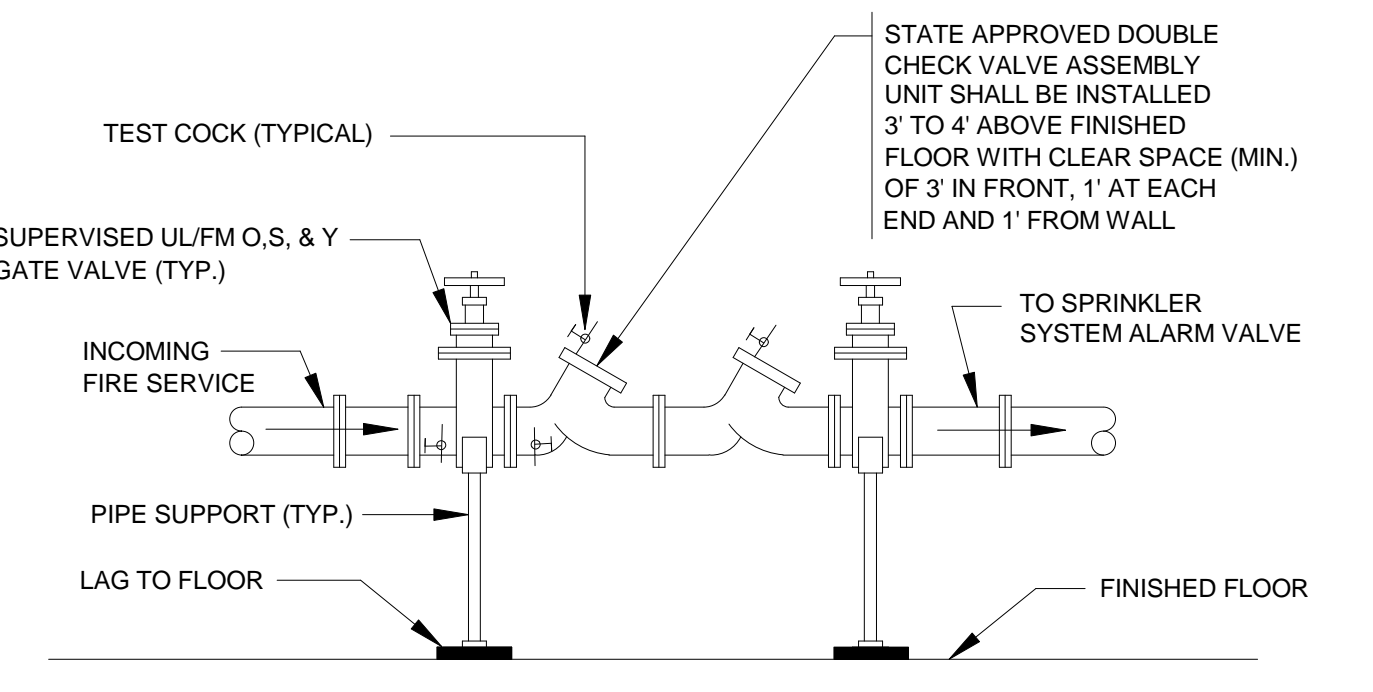
SYMBOL	ABBREV	DESCRIPTION
—	NEW	NEW WORK (DARK)
—	F	FIRE LINE ABV. GRADE
—	F	FIRE LINE UNDERGROUND
—	SP	SPRINKLER LINE (WET)
●		SIDEWALL SPRINKLER HEAD
○		PENDANT SPRINKLER HEAD
○		EXPOSED UPRIGHT SPRINKLER HEAD
○	DP, DN	PIPE DROP OR DOWN
○	UP	PIPE RISE OR UP
○		TEE LOOKING DOWN
○		CAP ON END OF PIPE
○		STRAINER
○		UNION
○	PG	PRESSURE GAGE
○	CV	CHECK VALVE
○	SCV	SUPERVISED CONTROL VALVE
○	VIV	VALVE IN VERTICAL
○	FDC	FIRE DEPARTMENT CONNECTION
○	FS	FLOW SWITCH
○	PV	POST INDICATOR VALVE
○	ABD	AUTOMATIC BALL DRIP
○	WMG	WATER MOTOR GONG
○	TYP.	TYPICAL
○	AC	CONCEALED ABOVE CEILING
○	BC	EXPOSED AT CEILING
○	AP	ACCESS PANEL
○	AFF	ABOVE FINISHED FLOOR
○	F&I	FURNISH AND INSTALL
○	PC	PLUMBING CONTRACTOR
○	FFC	FIRE PROTECTION CONTRACTOR
○	GC	GENERAL CONTRACTOR
○	HVAC	HEAT, VENT & AIR COND. CONTRACTOR
○	EC	ELECTRICAL CONTRACTOR
○	DCVA	DOUBLE CHECK VALVE ASSEMBLY
○	EXP	EXPOSED
○	LPD	LOW POINT DRAIN
○	FDV	FIRE DEPARTMENT VALVE
○	FDVC	FIRE DEPT. VALVE CABINET
○	FHC	FIRE HOSE CABINET
○	SCVA	SPRINKLER FLOOR CONTROL VALVE ASSEMBLY
○		NO AUTOMATIC SPRINKLERS

NOTE: NOT ALL SYMBOLS LISTED ARE APPLICABLE TO THIS PROJECT.

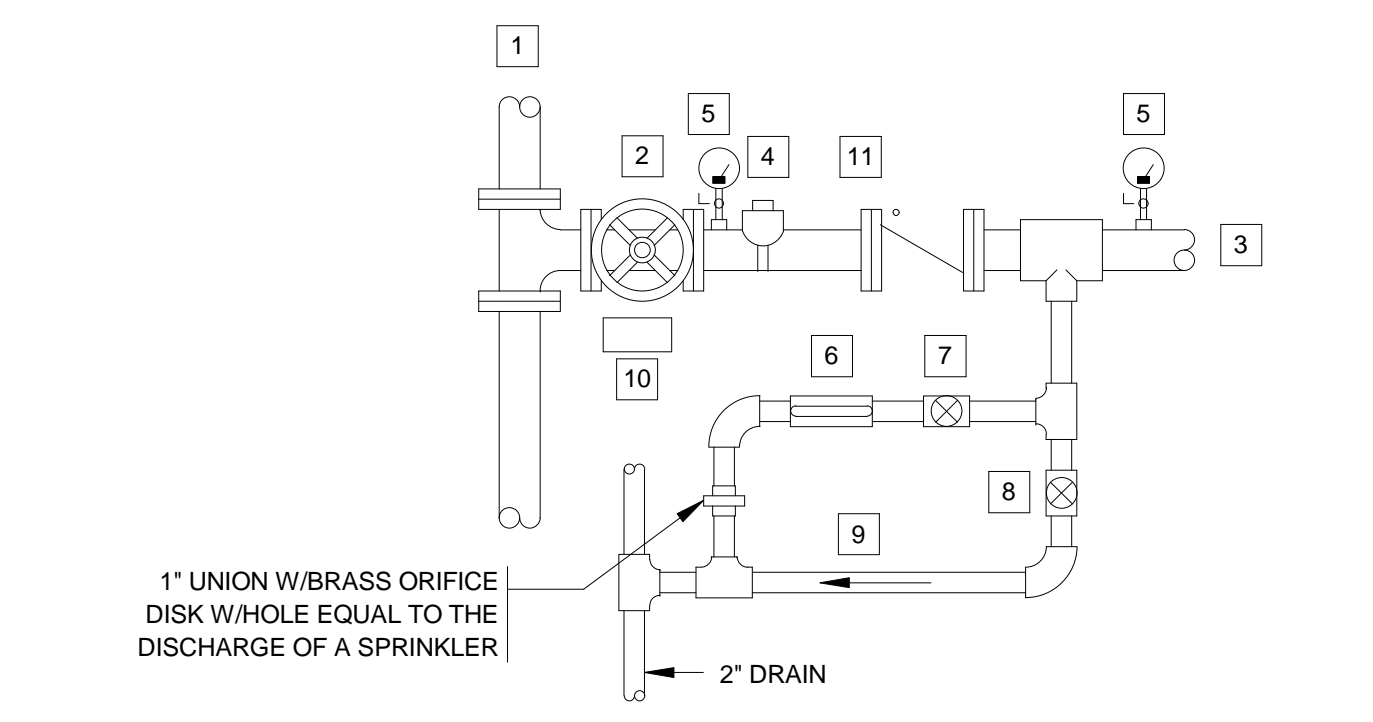
- ### GENERAL NOTES
- THE WORK HEREIN REQUIRED INCLUDES A HYDRAULICALLY DESIGNED SPRINKLER SYSTEM AS SPECIFIED IN THE DOCUMENTS AND AS APPROVED BY THE ARCHITECT.
 - THE FIRE PROTECTION DRAWINGS ARE DIAGRAMMATIC AND ARE TO BE USED FOR THE PURPOSE OF ESTABLISHING GENERAL LOCATIONS OF PIPING RUNS, SIZES OF PIPING, AND QUANTITIES OF FIXTURES AND EQUIPMENT TO BE FURNISHED HEREIN. REFER TO ARCHITECTURAL DRAWINGS FOR DIMENSIONS FOR EXACT LOCATIONS OF ALL SPRINKLER HEADS, AND EQUIPMENT, INCLUDING MOUNTING HEIGHTS. IN THE EVENT OF CONFLICT OR IF DIMENSIONS ARE NOT SHOWN, OBTAIN FIELD DIRECTIVE FROM THE ARCHITECT AS TO THE LOCATIONS OF ALL VISIBLE EQUIPMENT.
 - ALL PIPING SHOWN ON THESE PLANS OR THOSE TO BE DESIGNED HEREIN SHALL BE RUN CONCEALED ABOVE SUSPENDED CEILINGS, IN CHASES, OR IN PARTITIONS UNLESS SPECIFICALLY NOTED OTHERWISE.
 - ALL SPRINKLER HEADS IN CEILING TILES SHALL BE LOCATED IN THE EXACT CENTER OF TILE UNLESS SPECIFICALLY APPROVED OTHERWISE BY THE ARCHITECT.
 - REFER TO ARCHITECTURAL REFLECTED CEILING PLANS FOR CEILING HEIGHTS AND CEILING MATERIALS AND LAYOUTS. REFER TO THE RESPECTIVE PLUMBING, HVAC AND ELECTRICAL DRAWINGS FOR LIGHTING, DIFFUSER AND REGISTER LAYOUTS IN CEILINGS AND FOR PIPING, DUCTWORK AND EQUIPMENT ABOVE CEILINGS FOR COORDINATION PURPOSES. IN THE EVENT OF CONFLICT OR IF DIMENSIONS ARE NOT SHOWN, OBTAIN FIELD DIRECTIVE FROM THE ARCHITECT AS TO THE LOCATIONS OF ALL VISIBLE EQUIPMENT.
 - THE SPRINKLER CONTRACTOR SHALL PROVIDE AS PART OF THIS CONTRACT ALL SPRINKLERS BELOW FIXED OBSTRUCTIONS 48" AND LARGER AS REQUIRED BY NFPA 13, 8.5.5.3.3. IT IS THE RESPONSIBILITY OF THE SPRINKLER CONTRACTOR TO PROVIDE THE REQUIRED SPRINKLERS AND ALL ASSOCIATED PIPING, FITTINGS, HANGERS, ETC. FOR A COMPLETE INSTALLATION.
 - ATTENTION IS CALLED TO THE REQUIREMENT FOR THE PREPARATION OF COORDINATION DRAWINGS. IN ADDITION TO THE PREPARATION OF SHOP DRAWINGS ALSO PREPARE COORDINATION DRAWINGS AS OUTLINED IN THE SPECIFICATION. THE APPROVAL OF THE SHOP DRAWINGS INCLUDING DIMENSIONS SHOWN THEREIN DOES NOT RELIEVE THE CONTRACTOR.
 - SPECIFIC ATTENTION IS DIRECTED TO THE REQUIREMENTS OF MBC 914.7, 3305.3, 3306.1, AND NFPA 241-2004 REGARDING THE MAINTENANCE OF FIRE PROTECTION SYSTEMS INCLUDING STANDPIPES AND BULK FIRE MAINS BOTH DURING CONSTRUCTION AND DEMOLITION. MAINTAIN THE SYSTEMS AS REQUIRED BY THESE STANDARDS AS A MINIMUM.
 - THE SPRINKLER CONTRACTOR SHALL PROVIDE AS PART OF HIS CONTRACT AN INSPECTOR'S TEST STATION ON EACH SPRINKLER ZONE. THE INSPECTOR'S TEST STATION WILL BE LOCATED AT THE MOST HYDRAULICALLY REMOTE PART OF EACH ZONE AND SHALL BE IDENTIFIED ON THE SPRINKLER SHOP DRAWINGS.
 - REFER TO NFPA 13 TABLE 8.3.2.5(a) FOR TEMPERATURE RATING OF SPRINKLERS BASED ON DISTANCE FROM HEAT SOURCES SUCH AS HEATING DUCTS, DIFFUSERS AND UNIT HEATERS.
 - INSTALL SPRINKLER IN ALL SPACES ABOVE CEILINGS GREATER THAN 24" HIGH FOR NON-COMBUSTIBLE CONSTRUCTION AND ABOVE CEILINGS GREATER THAN 6" HIGH FOR COMBUSTIBLE CONSTRUCTION.
 - SPRINKLERS SHALL BE PERMITTED TO BE OMITTED FROM SKYLIGHTS AND SIMILAR CEILING POCKETS NOT EXCEEDING 32 FT² IN AREA, REGARDLESS OF HAZARD CLASSIFICATION, THAT ARE SEPARATED BY AT LEAST 10 FT HORIZONTALLY FROM ANY OTHER SKYLIGHT OR UNPROTECTED CEILING POCKET.



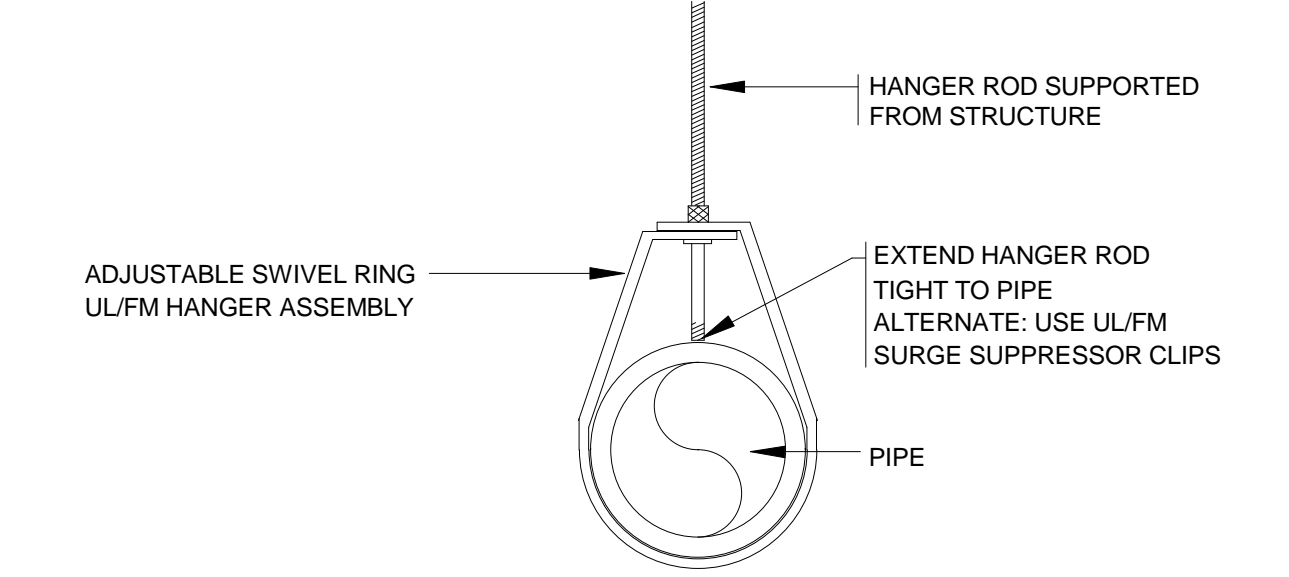
- ### 1 TYPICAL SLEEVE CONDITION DETAILS
- N.T.S.
- NOTE:
- ALL PIPING PENETRATING ALL PARTITIONS, WHETHER FIRE OR SMOKE RATED OR NOT, CONCEALED OR EXPOSED, SHALL BE SLEEVED AS DETAILED.
 - WHERE CONC. WALLS, SLABS, ETC., ARE CORE DRILLED, INSTALL SLEEVE FLUSH WITH BOTH SIDES, CAULKED & LEADED IN PLACE.
 - REFER TO DIVISION 4 & 9 FOR PROCEDURES & METHODS OF PATCHING AROUND SLEEVES AT GYPSUM, PLASTER & MASONRY. REFER TO SPECS FOR DELINEATION OF RESPONSIBILITY
 - SLEEVES SHALL BE SIZED TO PROVIDE MIN. 1" CLEARANCE BETWEEN PIPE O.D. & SLEEVE I.D. FOR PIPING UP TO 3" IN SIZE. PROVIDE 2" CLEARANCE BETWEEN PIPE O.D. & SLEEVE I.D. FOR PIPING 4" IN SIZE AND GREATER.



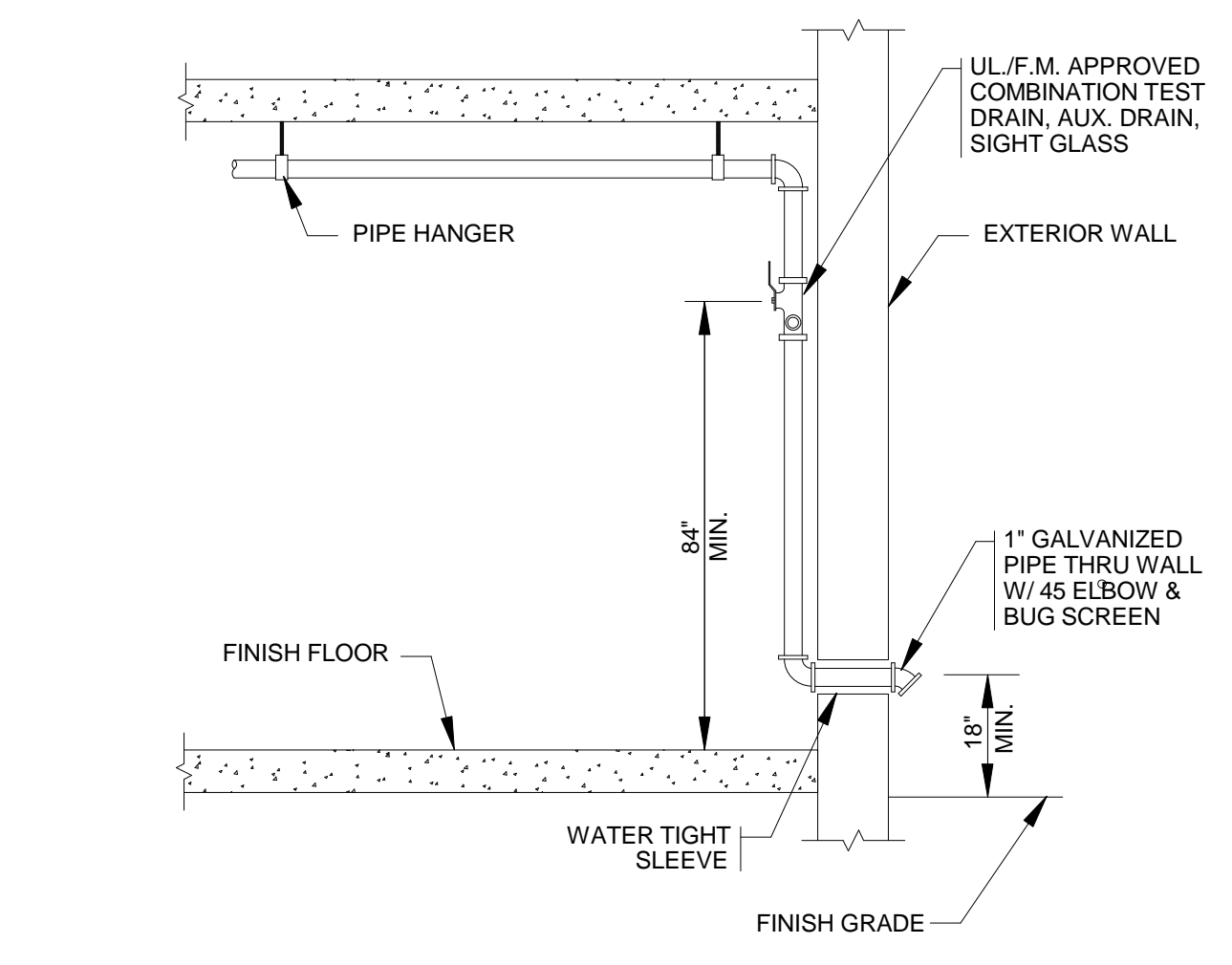
- ### 4 DOUBLE CHECK VALVE ASSEMBLY (DCVA) DETAIL
- SCALE: N.T.S.
- NOTE:
- SUPPORT PIPING AND FITTINGS AS REQUIRED TO CONFORM TO MANUFACTURERS AND OR CODE REQUIREMENTS.
 - MATERIALS AND METHODS FOR THIS INSTALLATION SHALL CONFORM TO ALL STATE & U.S. PUBLIC HEALTH SERVICES CODES AND REGULATIONS
 - FILE FOR AND OBTAIN ALL REQUIRED APPROVALS & PERMITS PRIOR TO INSTALLATION



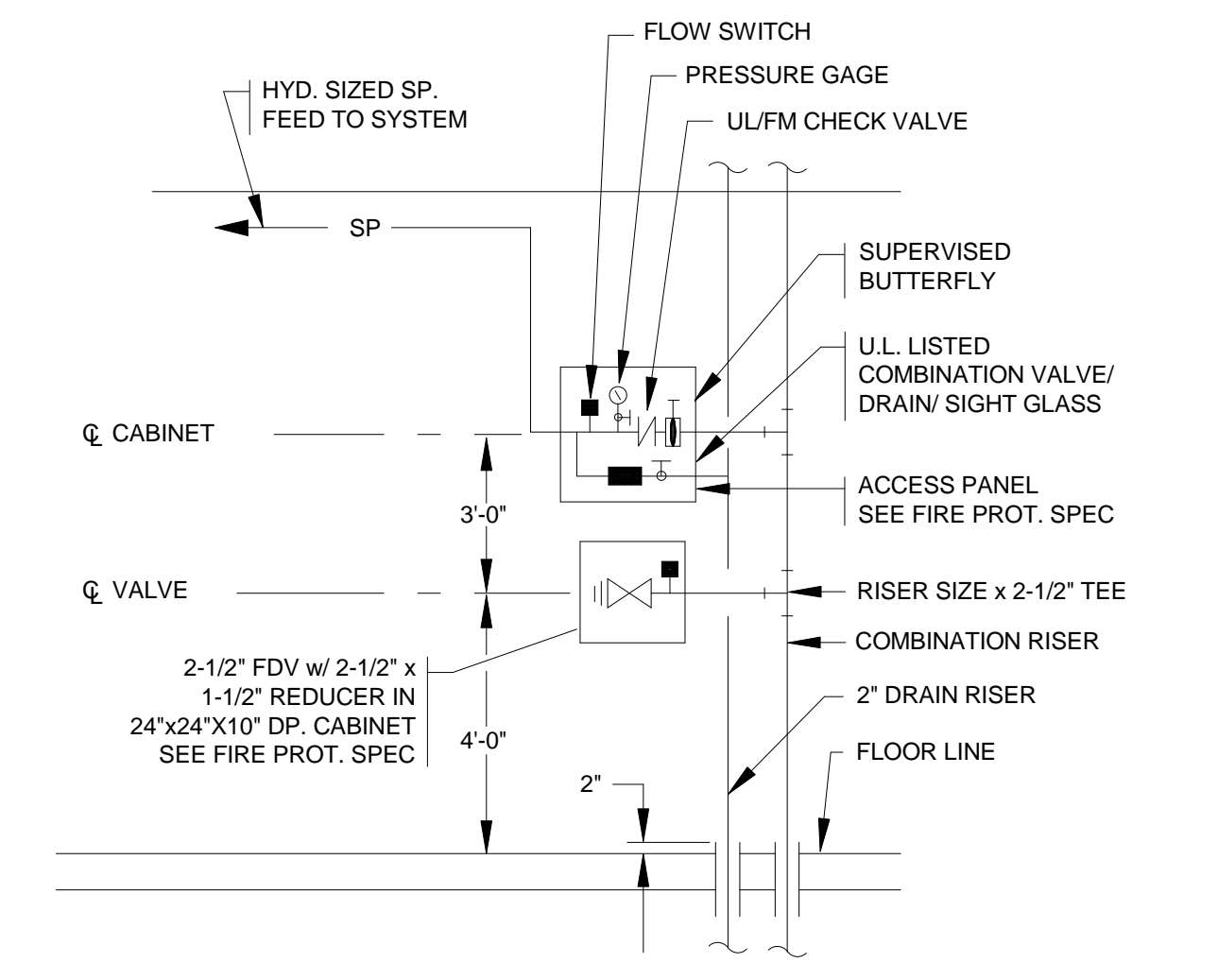
- | | |
|---------------------------------------|-----------------------------|
| 1 COMBINATION F/SP. STANDPIPE | 6 1" SIGHT GLASS |
| 2 ULFM INDICATING TYPE CONTROL VALVE | 7 1" INSPECTOR'S TEST VALVE |
| 3 TO CROSS CONNECTED SPRINKLER SYSTEM | 8 1" AUXILIARY DRAIN VALVE |
| 4 WATERFLOW SWITCH | 9 1" DRAIN LINE |
| 5 PRESSURE GAUGE WITH COCK | 10 IDENTIFICATION SIGN |
| | 11 ULFM CHECK VALVE |



- ### 2 TYPICAL END-OF-LINE BRANCH PIPE HANGER DETAIL
- SCALE: N.T.S.
- NOTE: TO BE USED AT ALL END-OF-LINE BRANCH HANGERS THROUGHOUT PROJECT



- ### 3 INSPECTOR'S TEST STATION PIPING SCHEMATIC
- SCALE: N.T.S.



- ### 5 COMBINED STANDPIPE RISER DETAIL
- SCALE: N.T.S.

Printed: 8/10/2012 12:05:20 PM
LEGEND DETAILS & NOTES - FIRE PROTECTION FPI.01

Architect:

omr architects inc.
543 Massachusetts Ave, West Acton, MA 01720
www.omr-architects.com t: 978.264.0160

Consulting Engineer:

GARCIA GALUSKA DESOUSA
CONSULTING ENGINEERS INC.
370 Faunce Corner Road, Dartmouth, MA 02747 • 1271
508-998-5700 • FAX 508-998-0863 • E-MAIL info@g-g-d.com

Registration:
Design Development Submission

Project Name and Address:

Concord-Carlisle Regional High School
500 Walden Street
Concord, MA 01742

Issue Submissions:

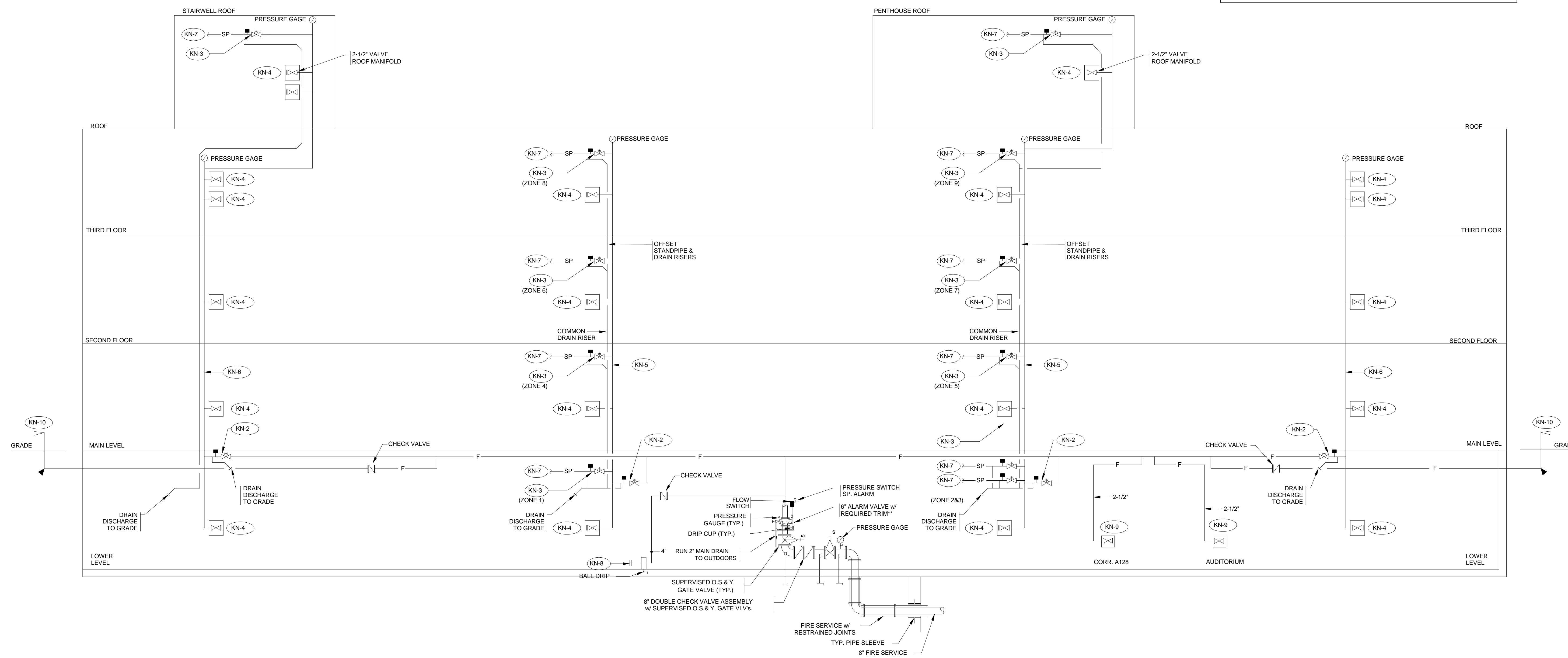
No.:	Date:	Description:
	8/15/2012	Design Development Submission

Title:

LEGEND, DETAILS & NOTES - FIRE PROTECTION

Date: August 15, 2012 Scale: Drawn: RAD Checked: BFH

Project No.: 1102.00
Drawing No.: **FP0.01**
© omr architects inc



- FIRE PROTECTION KEY NOTES**
- (KN-1) FIRE DISTRIBUTION MAIN.
 - (KN-2) BASE OF RISER CONTROLLER CONSISTING OF VALVE w/TAMPER SWITCH, FLOW SWITCH, AND TEST ASSEMBLY.
 - (KN-3) SCVA TO CONTROL SPRINKLER FLOW TO DESIGNATED ZONE. REFER TO DETAIL.
 - (KN-4) FDVC CONSISTING OF 2-1/2" FIRE DEPT. VALVE w/2-1/2" x 1-1/2" REDUCER
 - (KN-5) COMBINATION RISER
 - (KN-6) STANDPIPE RISER
 - (KN-7) HYDRAULICALLY SIZED SPRINKLER MAIN TO DESIGNATED FIRE ZONE.
 - (KN-8) FIRE DEPARTMENT CONNECTION
 - (KN-9) FIRE HOSE VALVE
 - (KN-10) POST TYPE FIRE DEPARTMENT CONN.

1 FIRE SERVICE RISER DIAGRAM
FP02 / N.T.S.

Printed: 8/10/2012 12:05:20 PM

Architect:
omr architects inc
 543 Massachusetts Ave, West Acton, MA 01720
 www.omr-architects.com t: 978.264.0160

Consulting Engineer:
GARCIA GALUSKA DESOUSA
 CONSULTING ENGINEERS INC.
 370 Faunce Corner Road, Dartmouth, MA 02747 - 1271
 508-998-5700 • FAX 508-998-0863 • E-MAIL info@gg-g.com

Registration:
Design Development Submission

Project Name and Address:
Concord-Carlisle Regional High School
 500 Walden Street
 Concord, MA 01742

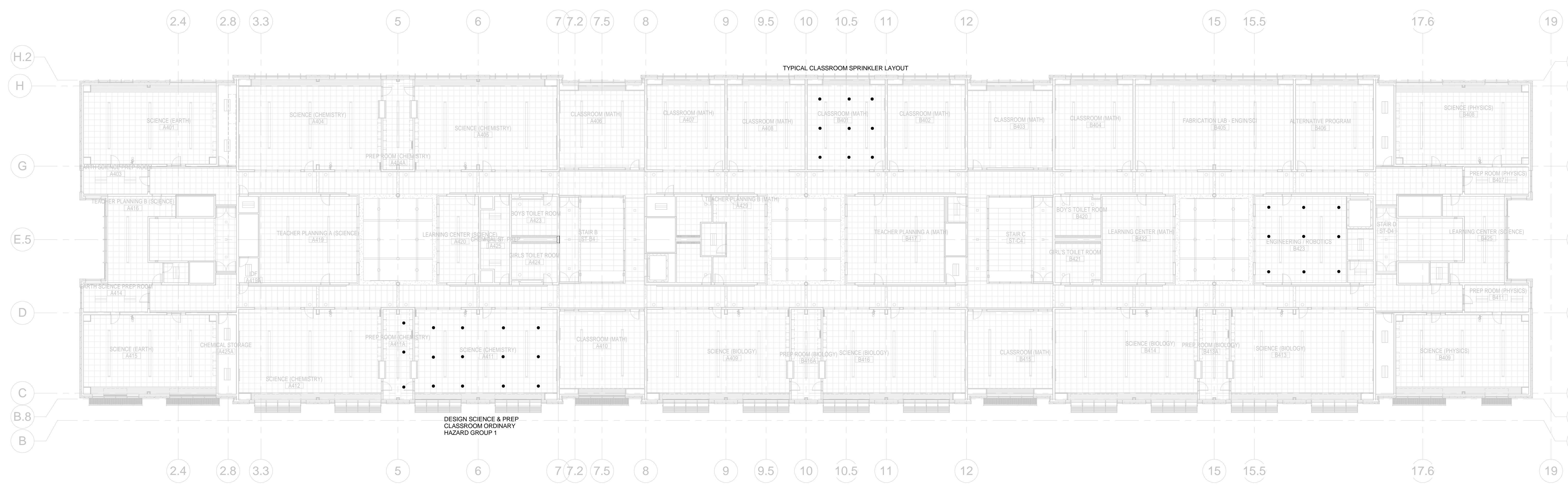
Issue Submissions:

No.:	Date:	Description:
1	8/15/2012	Design Development Submission

Title:
DETAILS - FIRE PROTECTION

Date: August 15, 2012 Scale: Drawn: RAD Checked: BFH

Project No.: 1102.00
 Drawing No.: **FP0.02**
 © omr architects inc

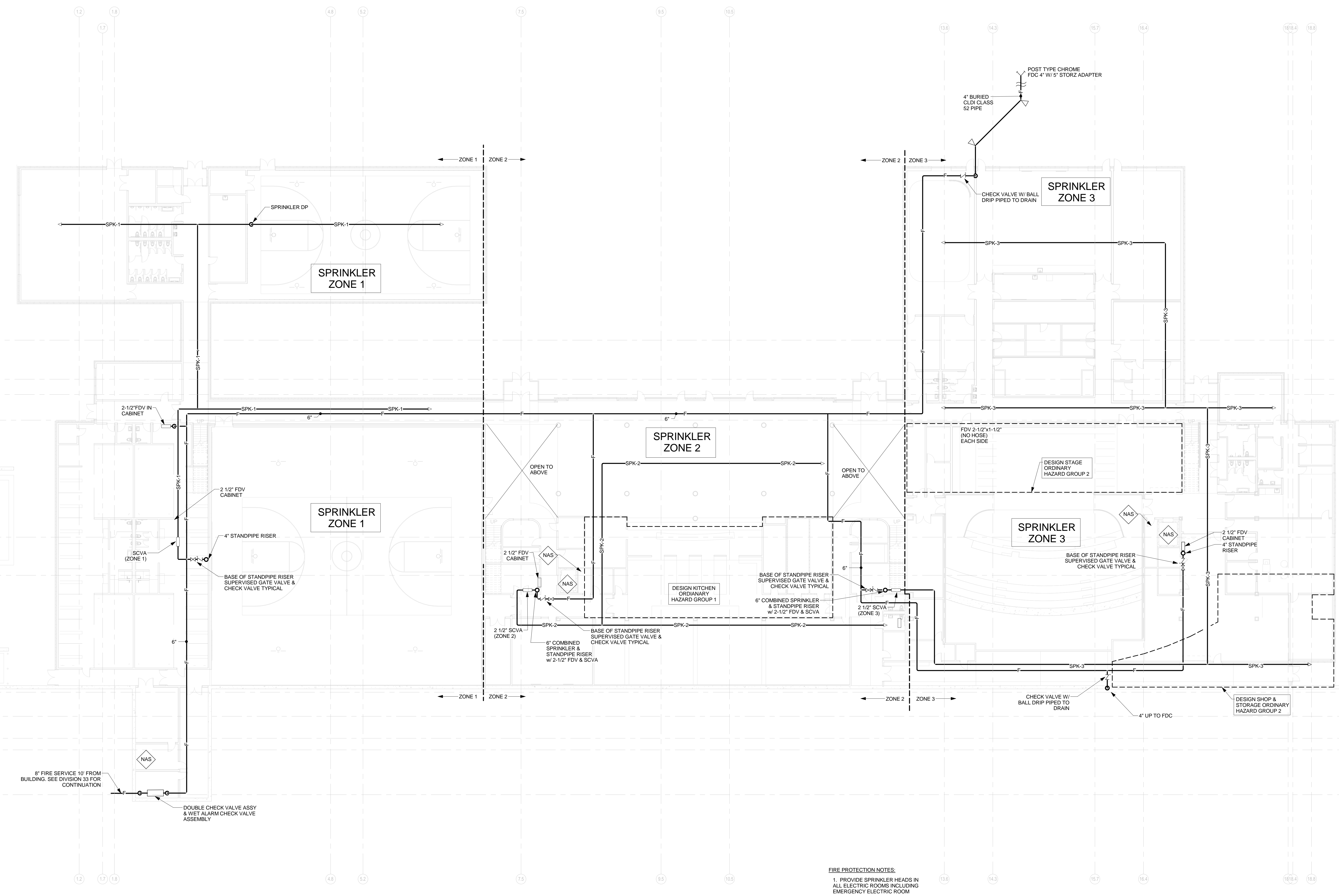


1 4TH FLOOR RCP - FIRE PROTECTION
1/16" = 1'-0"

Printed: 8/10/2012 12:05:24 PM
4TH FLOOR SPRINKLER LAYOUT - FIRE PROTECTION FP.3

Architect: omr architects inc 543 Massachusetts Ave, West Acton, MA 01720 www.omr-architects.com t: 978.264.0160	Consulting Engineer: GARCIA-GALUSKA DESOUSA CONSULTING ENGINEERS INC. 370 Faunce Corner Road, Dartmouth, MA 02747 - 1271 508-998-5700 • FAX 508-998-0863 • E-MAIL info@g-g-d.com	Registration: <div style="border: 1px solid black; padding: 5px; transform: rotate(-45deg); display: inline-block;"> Design Development Submission </div>	Project Name and Address: <h2 style="text-align: center;">Concord-Carlisle Regional High School</h2> <p style="text-align: center;">500 Walden Street Concord, MA 01742</p>	Issue Submissions: <table border="1" style="width: 100%; border-collapse: collapse;"> <thead> <tr> <th>No.:</th> <th>Date:</th> <th>Description:</th> </tr> </thead> <tbody> <tr> <td> </td> <td> </td> <td> </td> </tr> <tr> <td> </td> <td> </td> <td> </td> </tr> <tr> <td> </td> <td> </td> <td> </td> </tr> <tr> <td> </td> <td> </td> <td> </td> </tr> </tbody> </table>	No.:	Date:	Description:													Title: <h3 style="text-align: center;">4TH FLOOR SPRINKLER LAYOUT - FIRE PROTECTION</h3>	Project No.: 1102.00 Drawing No.: <h2 style="text-align: center;">FP1.3</h2>
No.:	Date:	Description:																			
				Date: August 15, 2012 Scale: 1/16" = 1'-0" Drawn: Author Checked: Checker		© omr architects inc															

Printed: 8/10/2012 12:06:26 PM
1ST FLOOR PIPING PLAN - FIRE PROTECTION FP2.0



1 - 1ST FLOOR - FIRE PROTECTION
1/16" = 1'-0"

- FIRE PROTECTION NOTES:**
1. PROVIDE SPRINKLER HEADS IN ALL ELECTRIC ROOMS INCLUDING EMERGENCY ELECTRIC ROOM
 2. PROVIDE FLEXIBLE CONNECTIONS FOR ALL SYSTEMS PASSING THRU EXPANSION JOINTS
 3. PROVIDE SPRINKLER HEADS IN SKYLIGHTS
 4. ALL FIRE DEPARTMENT VALVES ARE TO BE IN CABINETS FULLY RECESSED STAINLESS STEEL

Architect:
omr architects inc
543 Massachusetts Ave, West Acton, MA 01720
www.omr-architects.com t: 978.264.0160

Consulting Engineer:
GARCIA GALUSKA DESOUSA CONSULTING ENGINEERS INC.
370 Faunce Corner Road, Dartmouth, MA 02747 - 1271
508-998-5700 • FAX 508-998-0863 • E-MAIL info@g-g-d.com

Registration:
Design Development Submission

Project Name and Address:
Concord-Carlisle Regional High School
500 Walden Street
Concord, MA 01742

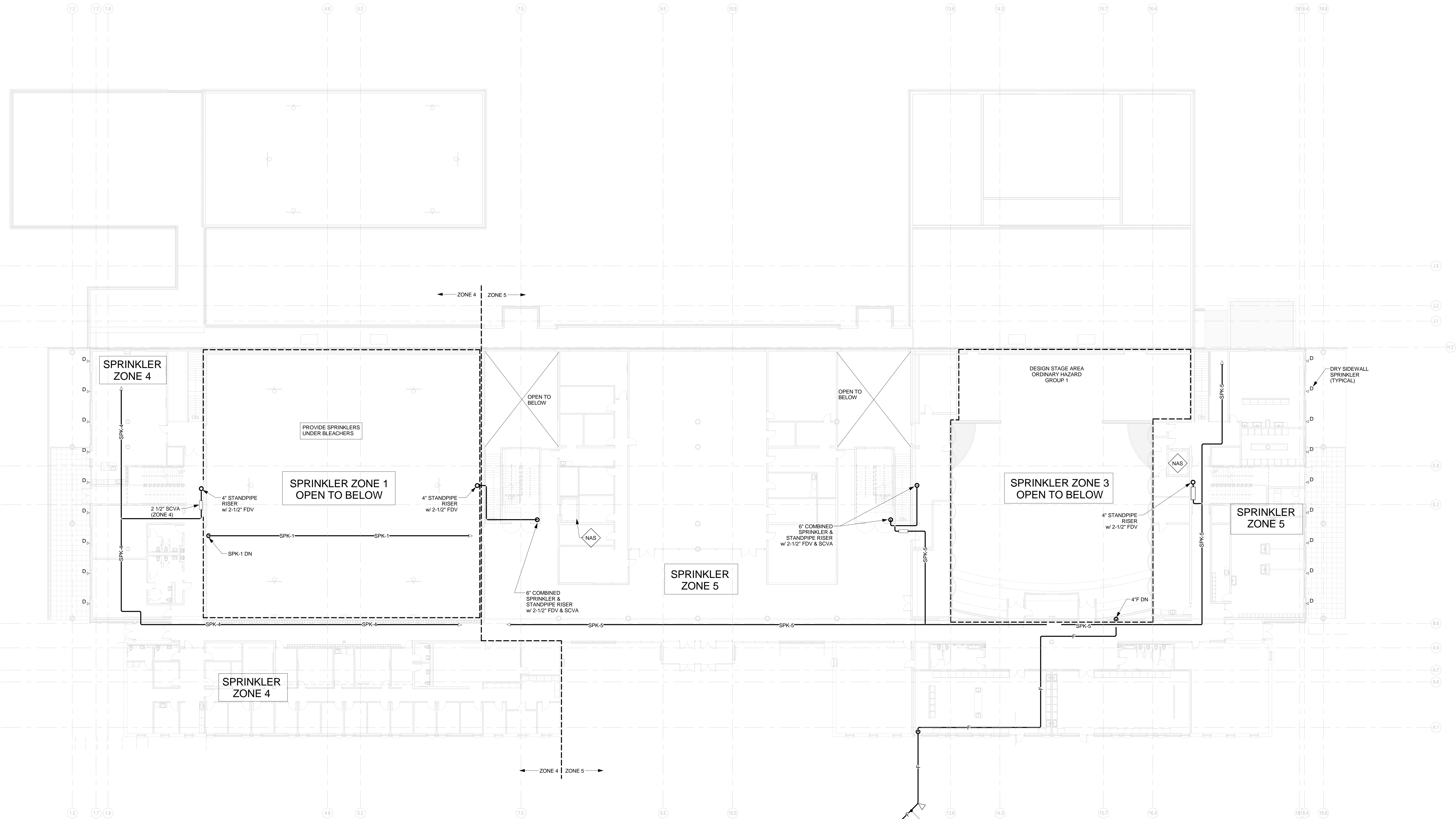
Issue Submissions:

No.:	Date:	Description:
1	8/15/2012	Design Development Submission

Title:
1ST FLOOR PIPING PLAN - FIRE PROTECTION

Date: August 15, 2012
Scale: 1/16" = 1'-0"
Drawn: RAD
Checked: REJ

Project No.: 1102.00
Drawing No.: **FP2.0**
© omr architects inc



FIRE PROTECTION NOTES:

1. PROVIDE SPRINKLER HEADS IN ALL ELECTRIC ROOMS INCLUDING EMERGENCY ELECTRIC ROOM
2. PROVIDE FLEXIBLE CONNECTIONS FOR ALL SYSTEMS PASSING THRU EXPANSION JOINTS
3. ALL FIRE DEPARTMENT VALVES ARE TO BE IN CABINETS FULLY RECESSED STAINLESS STEEL

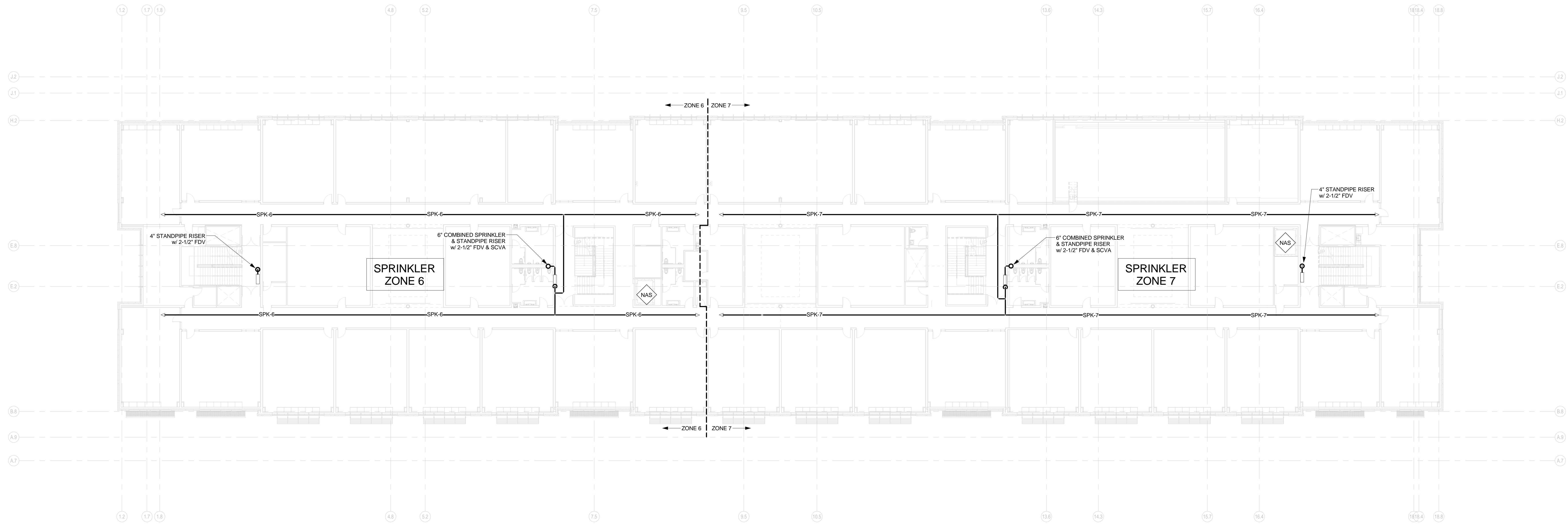
1 2ND FLOOR - FIRE PROTECTION
1/16" = 1'-0"

4" DICL CLASS 52
POST TYPE CHROME
FDC 4" W/ 5" STORZ ADAPTER

Printed: 8/10/2012 12:05:29 PM
2ND FLOOR PIPING PLAN - FIRE PROTECTION FP2.1

<p>Architect:</p> <p>omr architects inc</p> <p>543 Massachusetts Ave, West Acton, MA 01720 www.omr-architects.com t: 978.264.0160</p>	<p>Consulting Engineer:</p> <p>GARCIA GALUSKA DESOUSA CONSULTING ENGINEERS INC.</p> <p>370 Faunce Corner Road, Dartmouth, MA 02747 - 1271 508-998-5700 • FAX 508-998-0863 • E-MAIL info@gg-d.com</p>	<p>Registration:</p> <p><i>Design Development Submission</i></p>	<p>Project Name and Address:</p> <p>Concord-Carlisle Regional High School</p> <p>500 Walden Street Concord, MA 01742</p>	<p>Issue Submissions:</p> <table border="1"> <thead> <tr> <th>No.:</th> <th>Date:</th> <th>Description:</th> </tr> </thead> <tbody> <tr> <td>1</td> <td>8/15/2012</td> <td>Design Development Submission</td> </tr> </tbody> </table>	No.:	Date:	Description:	1	8/15/2012	Design Development Submission	<p>Title:</p> <p>2ND FLOOR PIPING PLAN - FIRE PROTECTION</p> <p>Date: August 15, 2012 Scale: 1/16" = 1'-0" Drawn: RAD Checked: REJ</p>	<p>Project No.: 1102.00 Drawing No.: FP2.1 © omr architects inc</p>
No.:	Date:	Description:										
1	8/15/2012	Design Development Submission										

E
D
C
B



- FIRE PROTECTION NOTES:**
1. PROVIDE SPRINKLER HEADS IN ALL ELECTRIC ROOMS INCLUDING EMERGENCY ELECTRIC ROOM
 2. COLUMN LINES 13 & 13.1 BUILDING EXPANSION JOINT PROVIDE FLEXIBLE EXPANSION JOINTS FOR ALL SYSTEMS PASSING THRU EXPANSION JOINT
 3. ALL FIRE DEPARTMENT VALVES ARE TO BE IN CABINETS FULLY RECESSED STAINLESS STEEL

① 3RD FLOOR - FIRE PROTECTION
1/16" = 1'-0"

Printed: 8/10/2012 12:05:31 PM
3RD FLOOR PIPING PLAN - FIRE PROTECTION FP2.2

Architect:

omr architects inc
543 Massachusetts Ave, West Acton, MA 01720
www.omr-architects.com t: 978.264.0160

Consulting Engineer:

GARCIA GALUSKA DESOUSA CONSULTING ENGINEERS INC.
370 Faunce Corner Road, Dartmouth, MA 02747 - 1271
508-998-5700 • FAX 508-998-0863 • E-MAIL info@g-g-d.com

Registration:

Design Development Submission

Project Name and Address:

Concord-Carlisle Regional High School
500 Walden Street
Concord, MA 01742

Issue Submissions:

No.:	Date:	Description:
	8/15/2012	Design Development Submission

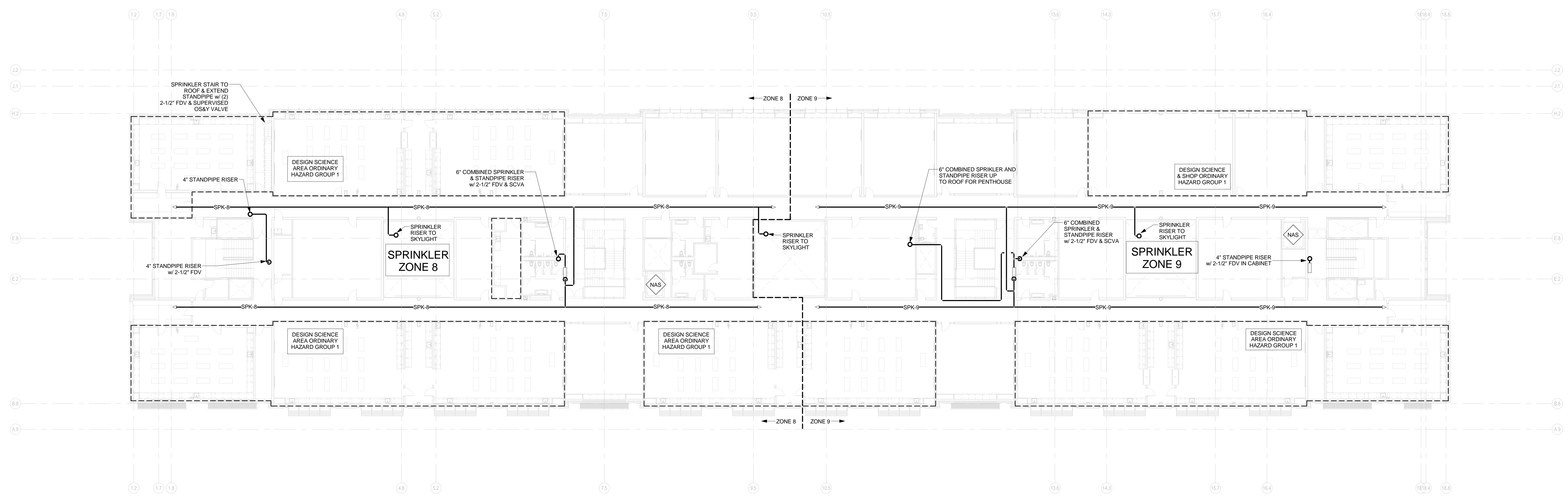
Title:

3RD FLOOR PIPING PLAN - FIRE PROTECTION

Date: August 15, 2012 Scale: 1/16" = 1'-0" Drawn: RAD Checked: REJ

Project No.: 1102.00
Drawing No.: **FP2.2**
© omr architects inc

E
D
C
B
A



- FIRE PROTECTION NOTES:**
1. PROVIDE SPRINKLER HEADS IN ALL ELECTRIC ROOMS INCLUDING EMERGENCY ELECTRIC ROOM.
 2. PROVIDE FLEXIBLE CONNECTIONS FOR ALL SYSTEMS PASSING THRU EXPANSION JOINTS
 3. PROVIDE SPRINKLER HEADS IN SKYLIGHTS
 4. ALL FIRE DEPARTMENT VALVES ARE TO BE IN CABINETS FULLY RECESSED STAINLESS STEEL
 5. DESIGN SCIENCE & PREP GROUP CLASSROOMS ORDINARY HAZARD GROUP 1

1 4TH FLOOR - FIRE PROTECTION
1/16" = 1'-0"

Printed: 8/10/2012 12:05:38 PM
4TH FLOOR PIPING PLAN - FIRE PROTECTION FP2.3

<p>Architect:</p> <p>omr architects inc</p> <p>543 Massachusetts Ave, West Acton, MA 01720 www.omr-architects.com t: 978.264.0160</p>	<p>Consulting Engineer:</p> <p>GARCIA GALUSKA DESOUSA CONSULTING ENGINEERS INC.</p> <p>370 Faunce Corner Road, Dartmouth, MA 02747 - 1271 508-998-5700 • FAX 508-998-0863 • E-MAIL info@g-g-d.com</p>	<p>Registration:</p> <p><i>Design Development Submission</i></p>	<p>Project Name and Address:</p> <p>Concord-Carlisle Regional High School</p> <p>500 Walden Street Concord, MA 01742</p>	<p>Issue Submissions:</p> <table border="1"> <thead> <tr> <th>No.:</th> <th>Date:</th> <th>Description:</th> </tr> </thead> <tbody> <tr> <td>1</td> <td>8/15/2012</td> <td>Design Development Submission</td> </tr> </tbody> </table>	No.:	Date:	Description:	1	8/15/2012	Design Development Submission	<p>Title:</p> <p>4TH FLOOR PIPING PLAN - FIRE PROTECTION</p> <p>Date: August 15, 2012 Scale: 1/16" = 1'-0" Drawn: RAD Checked: REJ</p>	<p>Project No.: 1102.00 Drawing No.: FP2.3 © omr architects inc</p>
No.:	Date:	Description:										
1	8/15/2012	Design Development Submission										

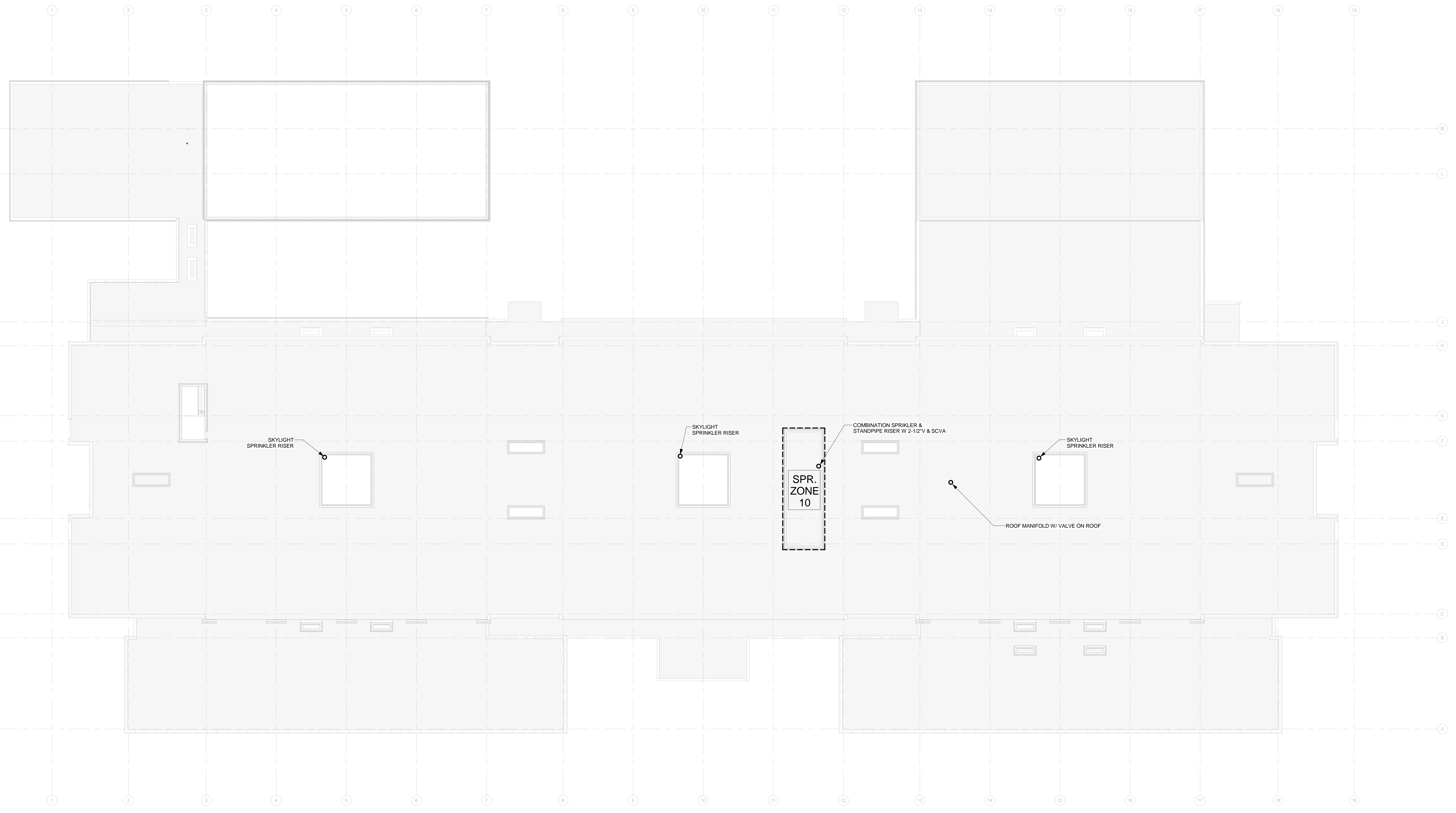
E

D

C

B

A



1 ROOF PLAN - FIRE PROTECTION
 1/16" = 1'-0"

Printed: 8/10/2012 12:05:39 PM
 ROOF PLAN - FIRE PROTECTION FP3.0

Architect:

omrarchitects inc

543 Massachusetts Ave, West Acton, MA 01720
 www.omr-architects.com t: 978.264.0160

Consulting Engineer:

GARCIA GALUSKA DESOUSA
 CONSULTING ENGINEERS INC.

370 Faunce Corner Road, Dartmouth, MA 02747 - 1271
 508-998-5700 • FAX 508-998-0863 • E-MAIL info@g-g-d.com

Registration:

*Design
 Development
 Submission*

Project Name and Address:

Concord-Carlisle Regional High School

500 Walden Street
 Concord, MA 01742

Issue Submissions:

No.:	Date:	Description:
1	8/15/2012	Design Development Submission

Title:

ROOF PLAN - FIRE PROTECTION

Date: August 15, 2012 Scale: 1/16" = 1'-0"

Drawn: Author Checked: Checker

Project No.: 1102.00
 Drawing No.: **FP3.0**
 © omr architects inc